



# Pocket Cabin Options

## PRE-FAB INNOVATIONS

innovation that transforms lives

**Advantage** - Drywall, Cement Board Siding, Value-based selections, Limited Customization

**Signature**—Advantage + T&G Ceilings, Wood floors, granite counters, shiplap accents

**Premier** - Signature + Colored Windows, Metal Roof, Custom Consultant for Design with Allowances, Exposed wood interior treatments

### Cabin 800

Advantage: \$146,275

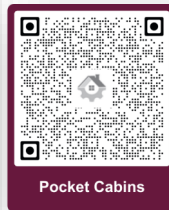
Signature: \$161,325

Premier: \$173,526

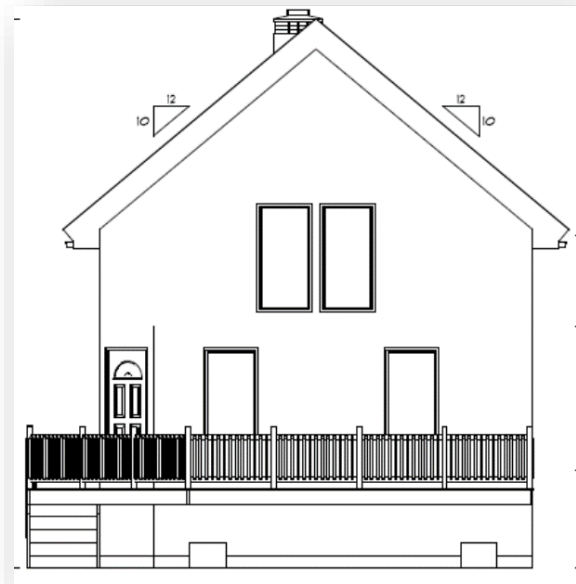
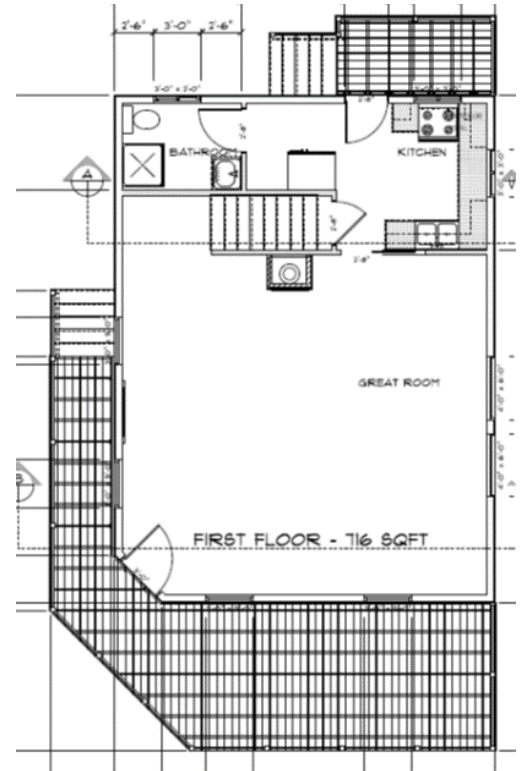
\*

800 sq ft

28' x 40'



Pocket Cabins



### Cabin 1120

Advantage: \$169,658

Signature: \$183,124

Premier: \$190,352

\*

1120 sq ft

28' x 40'



Images above are a mix of inspiration, renderings & actual pictures of builds

\* Pricing Subject to Change

[www.prefabinnovations.com](http://www.prefabinnovations.com)

[info@ciprefab.com](mailto:info@ciprefab.com)

559-582-3871



# Pocket Cabin Options

## PRE-FAB INNOVATIONS

innovation that transforms lives

**Advantage** - Drywall, Cement Board Siding, Value-based selections, Limited Customization

**Signature**—Advantage + T&G Ceilings, Wood floors, granite counters, shiplap accents

**Premier** - Signature + Colored Windows, Metal Roof, Custom Consultant for Design with Allowances, Exposed wood interior treatments

### Cabin 1400

Advantage: \$202,332

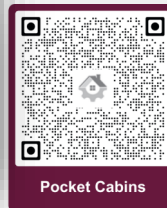
Signature: \$216,254

Premier: \$224,842

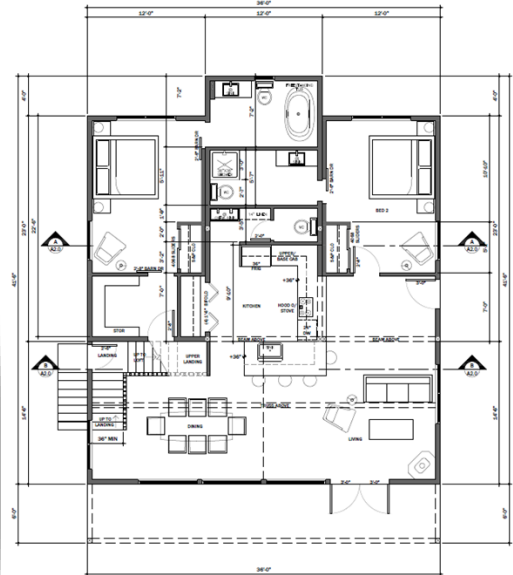
\*

1400 sq ft

36' x 38'



Pocket Cabins



ALL DIMENSIONS ARE FOR PLANNING PURPOSES ONLY. CONTRACTOR TO VERIFY ALL CONDITIONS AND MAKE ADJUSTMENTS AS REQUIRED.

LEVEL 1 FLOOR PLAN  
SCALE: 1/4"=1'-0"

### Cabin 1500

Advantage: \$218,262

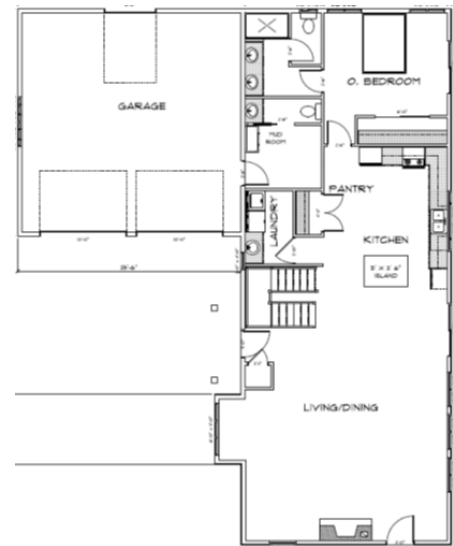
Signature: \$229,453

Premier: \$243,265

\*

1500 sq ft

24' x 60'



\* Pricing Subject to Change

Images above are a mix of inspiration, renderings & actual pictures of builds

[www.prefabinnovations.com](http://www.prefabinnovations.com)

[info@ciprefab.com](mailto:info@ciprefab.com)

559-582-3871



# Pocket Cabin Options

## PRE-FAB INNOVATIONS

innovation that transforms lives

### Barndo 1500

Advantage: \$219,000 \*

Signature: \$232,365

Premier: \$247,869

1500 sq ft

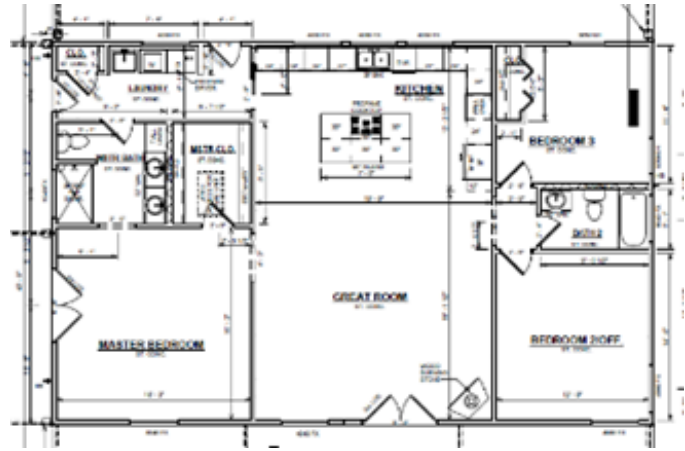
32' x 50'



**Advantage** - Drywall, Cement Board Siding, Value-based selections, Limited Customization

**Signature**—Advantage + T&G Ceilings, Wood floors, granite counters, shiplap accents

**Premier** - Signature + Colored Windows, Metal Roof, Custom Consultant for Design with Allowances, Exposed wood interior treatments



1575 sq ft

36' x 36'

### Cabin 1575

Advantage: \$229,324

Signature: \$239,564

Premier: \$254,965

\*



\* Pricing Subject to Change

Im-